





SKI or SNOWBOARD ACADEMY

Serre Chevalier

nacel●

Duration	8 days / 7 nights
Ages	7-17 years old (2 age groups 7-12 and 13-17)
Dates	WINTER From February 15 th to February 22 nd , 2025 From February 22 nd to March 1 st , 2025
Housing	<p>Serre Chevalier (2491 m)</p> <p>Serre Chevalier is the largest ski area in the Southern Alps, one of the largest in Europe, located at the gates of the Écrins National Park. This immense playground offers a high mountain atmosphere for great skiing, larch forests for quiet skiing, play areas for fun skiing, protected areas for family skiing and dedicated beginner areas.</p> <p>Located in the heart of the village of La Salle les Alpes, in the Serre Chevalier valley, the center welcomes you in a warm and friendly atmosphere. You can also enjoy a pleasant sunny terrace.</p> <p>The center is located at 300 meters walking distance from the slopes of the Serre Chevalier resort.</p>  

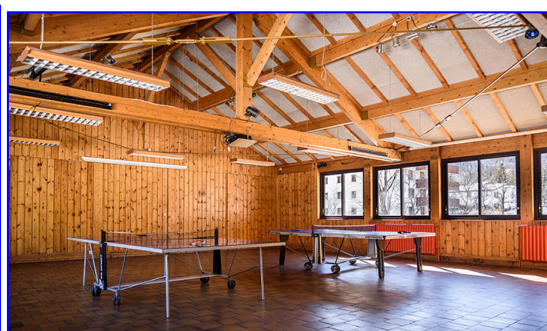
THE PRICE INCLUDES

7 nights, full board, in a chalet.

The chalet has bedrooms that can each accommodate 4 to 6 students. The bedrooms benefit from a ensuite bathroom and toilet.

Sheets and blankets are provided.

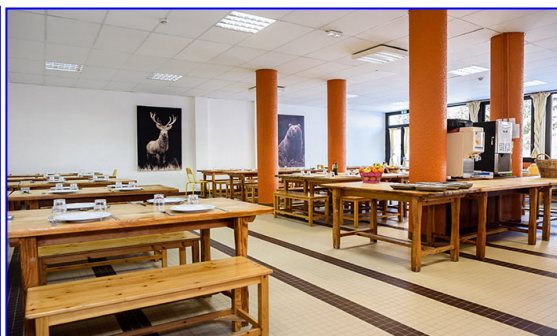
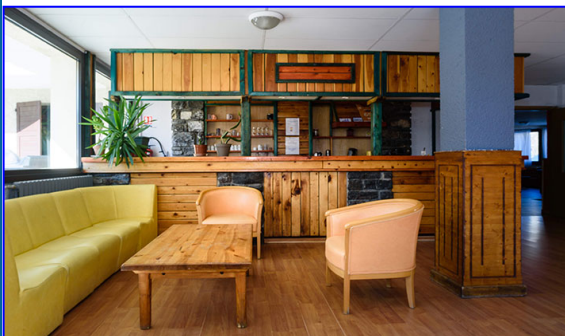
Facilities: a multipurpose room with sound system, ping-pong tables, table football as well as a lounge bar with a library.



Participants will be able to eat in a large collective catering room and enjoying a panoramic view of the area.

Meals are taken in the refectory and are prepared on site by the center's Chef. A balanced and varied cuisine is on offer to the camper. All menus are controlled and comply with the requirements of health authorities for children's dietary needs.

Accommodation



Catering

Full board.

Full board includes breakfast, lunch and dinner. Full board begins with dinner on the 1st day and ends with lunch on the last day.

Catering on site.

Transportation

Journey from Paris : supervised transfer by train then private bus to the mountain lodge.

Program	<p>ACADEMY SKI or SNOWBOARD 13-17 years old</p> <p>Main activity : Alpine skiing or snowboarding (5 hours a day for 6 days)</p> <p>Alpine skiing</p> <ul style="list-style-type: none"> • Discovery skiing (beginners only): lessons in a ski school (2 hours a day for 4 days) and specific support from our coaches to learn in safety and gain confidence in skiing. • Ski intermediary (2nd and 3rd star level): skiing with friends at your own pace, supervised by our coaches. • Ski expert (level higher than 3 stars): supervised by our instructors, participants will have access to the entire ski area to have fun. <p>Snowboard</p> <ul style="list-style-type: none"> • Snow discovery: lessons in a ski school (2 hours a day for 4 days) and specific support from our coaches to learn about safety and progress gently. • Snow expert (from Snow 2 level): supervised by our instructors, participants will be able to access the snowparks, the entire ski area and try an introduction to freestyle. <p>Evening activities</p>
Activities / visits	<p>Visit of the village, ice skating, games, free time, swimming pool, sled, snow games...</p> <p>Note that all the campers have to follow the given schedule (skiing is compulsory).</p>
Management team	<p>1 supervisor for 6 participants! In order to guarantee real progress and optimal safety conditions, we select our coaches from qualified professionals (CAPEPS, BE, etc.) as well as our leading teams (BAFA, CRPE) focused on comfort and well-being. Be one of our campers! They share the daily life of the participants and supervise them at every moment of the day with their advice, care, experience and kindness. In addition, in each of our residences, our health assistants ensure the proper medical follow-up and physical recovery of the children so that they are in the best conditions for a successful stay. They constantly ensure the comfort and safety of the child.</p>
Other	<ul style="list-style-type: none"> - 24/7 hotline in France, outside office opening hours. - Communication with parents via a blog, updated daily (in French) - Compliance with the national health protocols. Our management teams as well as the staff of our accommodation residences are trained to the latest protocols.
Certificate	<p>Sports Elite Jeunes is a member of UNOSEL (National Union of Organizations of Educational, Linguistic Stays and Language Schools).</p>
PRICE PER WEEK	
Departing from Paris (with a chaperone)	1349 €
OUR PRICES DO NOT INCLUDE	
Meals during the return journeys, with the exception of lunch on the last day.	

